

3 symmetrical forms

# Assignment #4

---

Emmy Kovalic

14th February, 2023

ATLS 3100 - Sound

## Reference photos

Grand  
Staircase



Spiral staircase

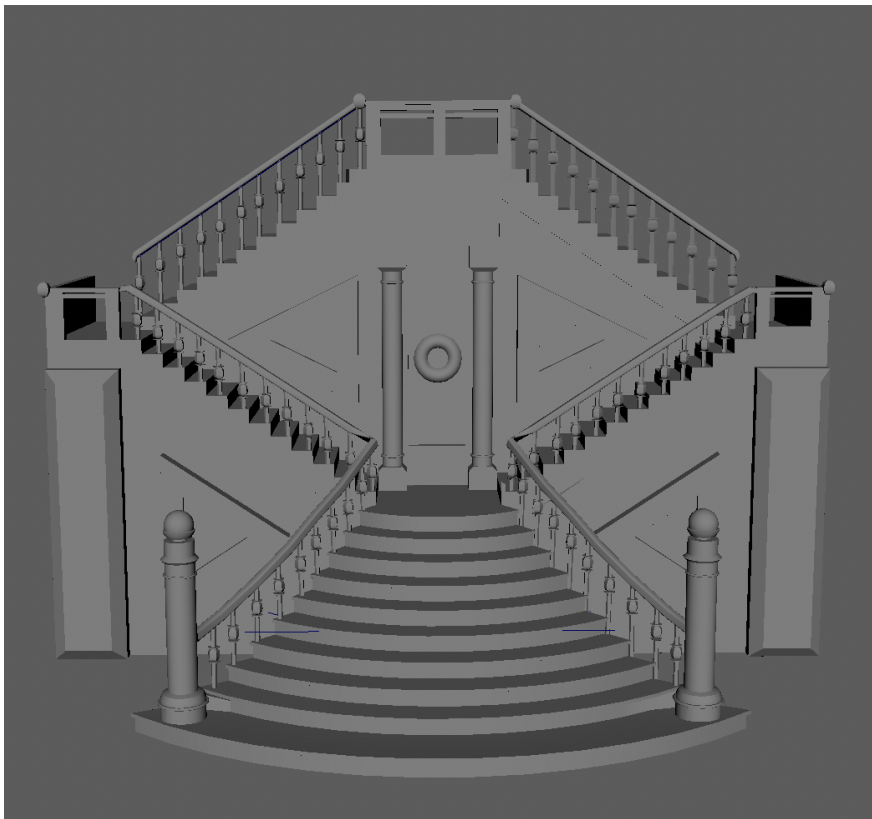


Chandelier

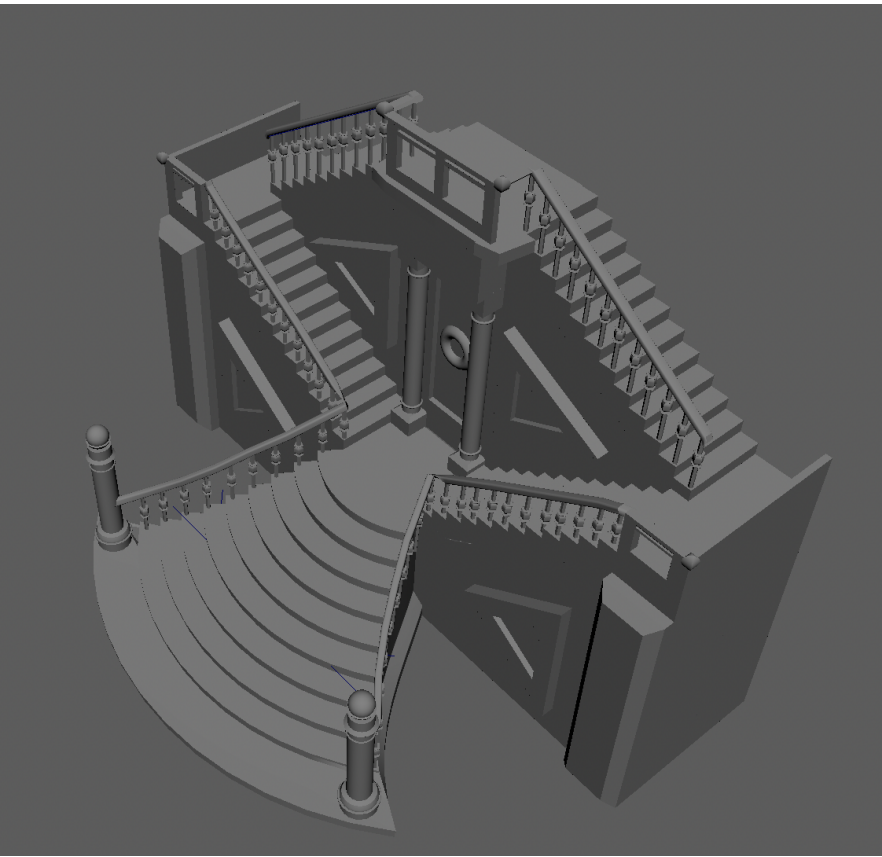
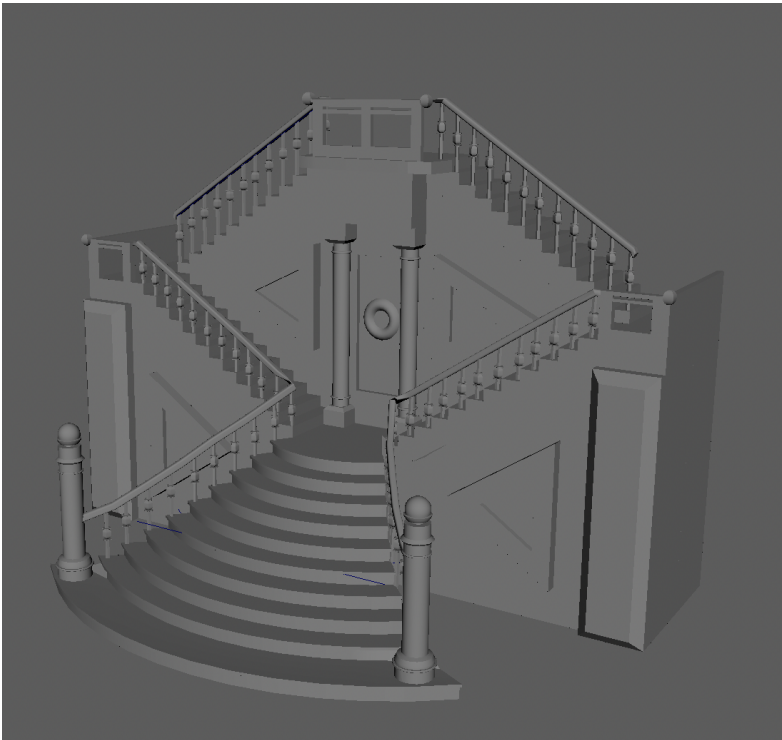
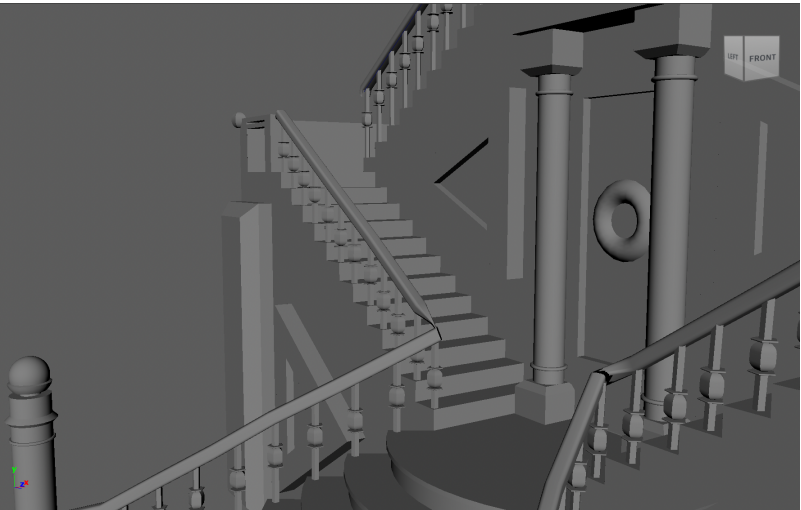
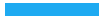


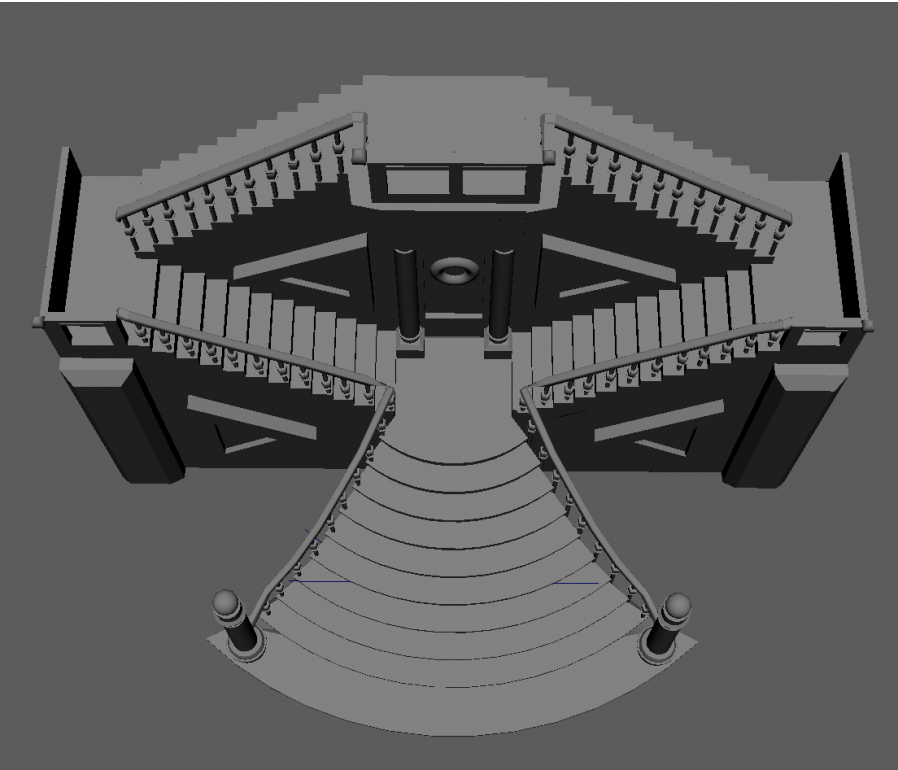
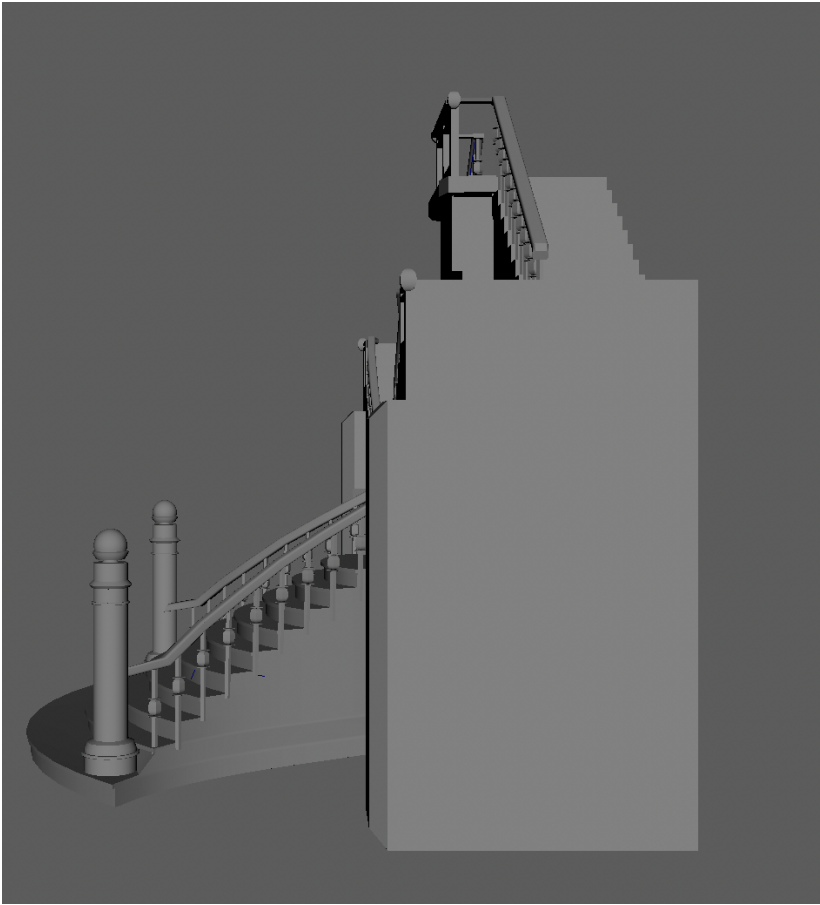
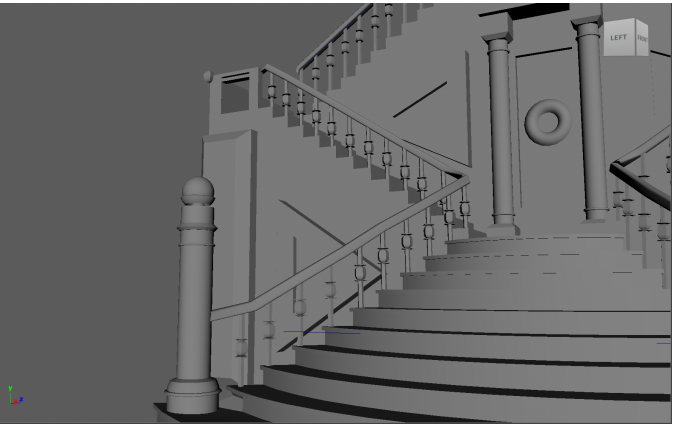
## Grand Staircase

(I messed up the texture and color here and I'm not sure how to change it back so these pictures aren't the best D: )



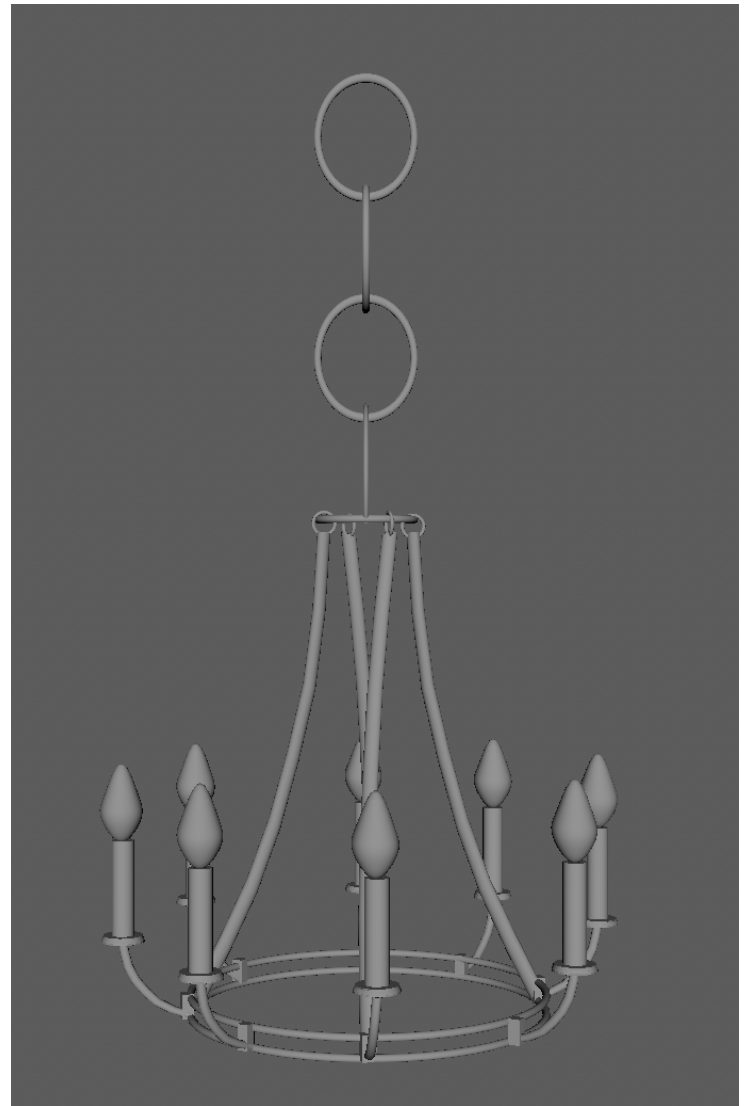
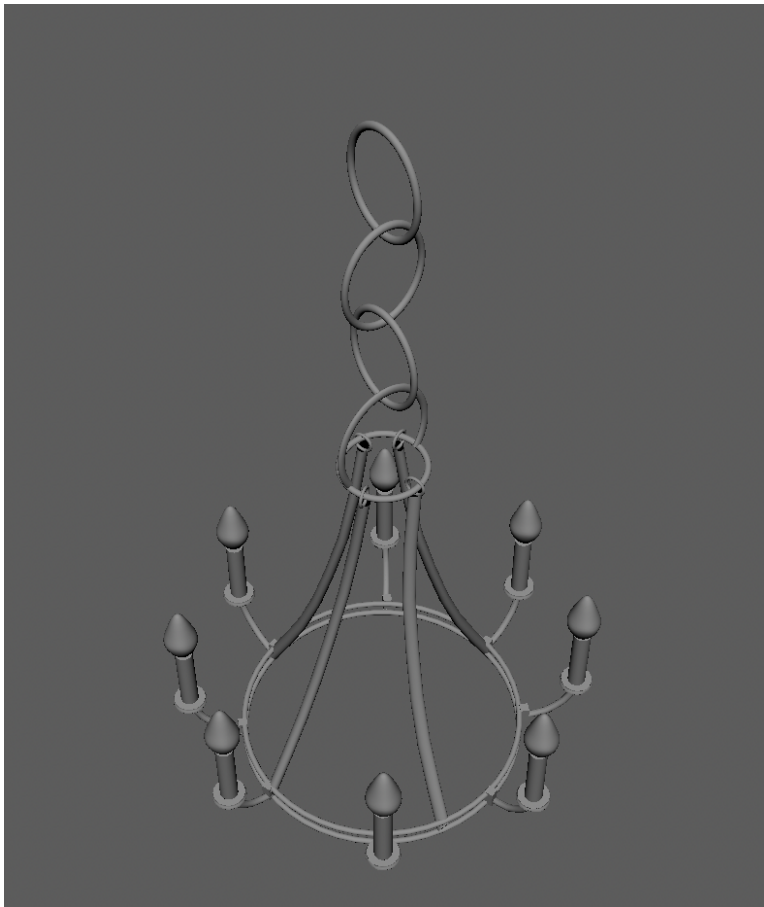


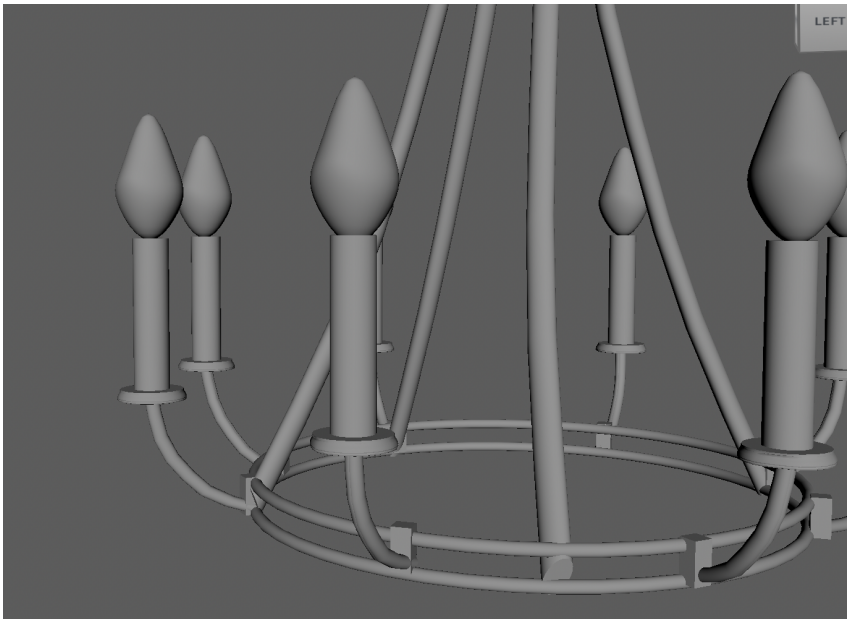
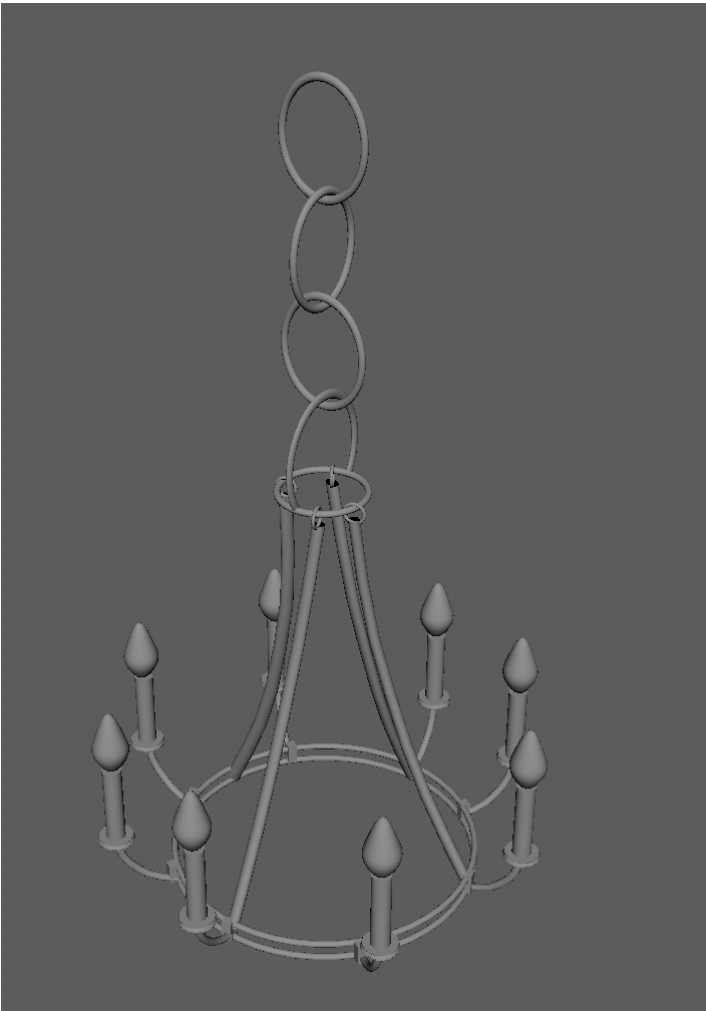




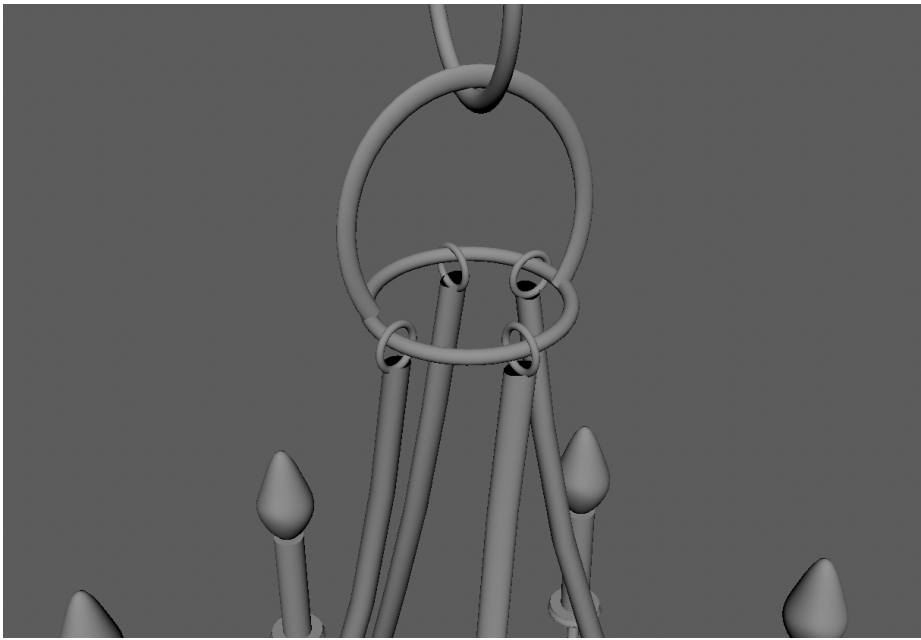
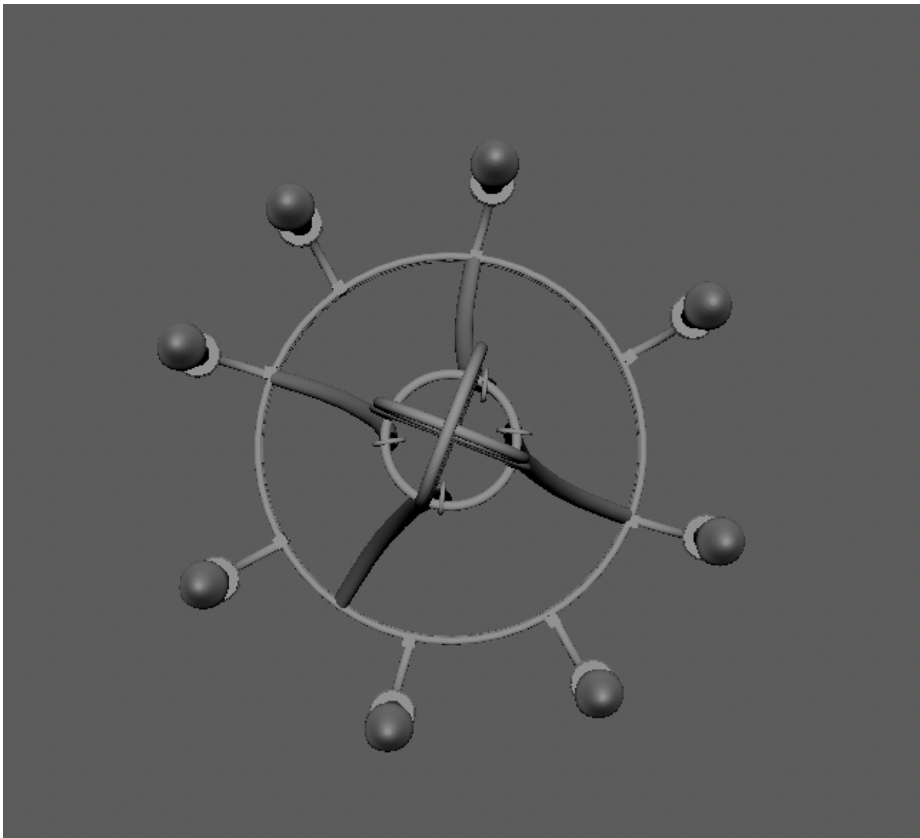
---

## Chandelier

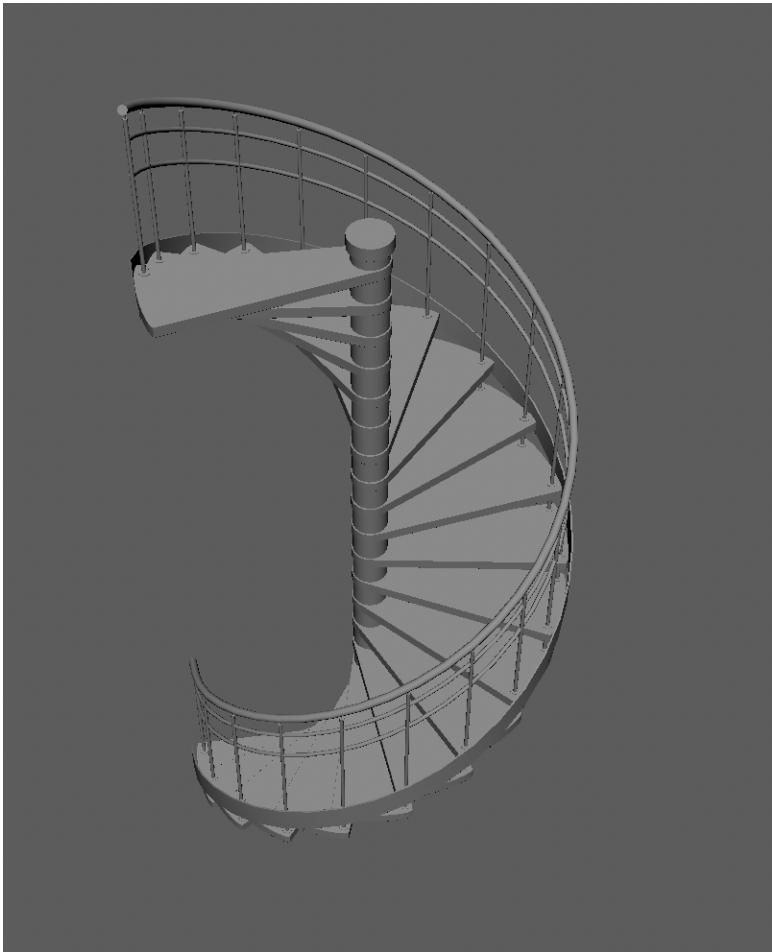
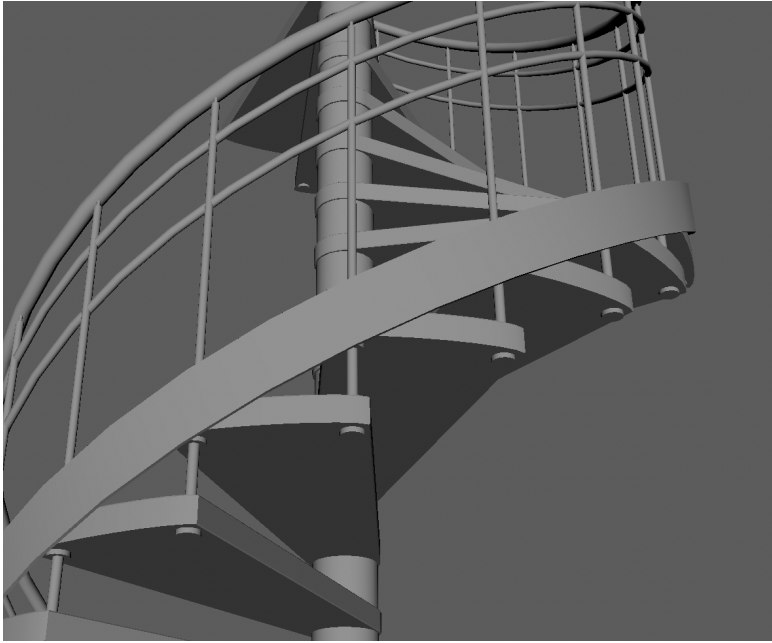


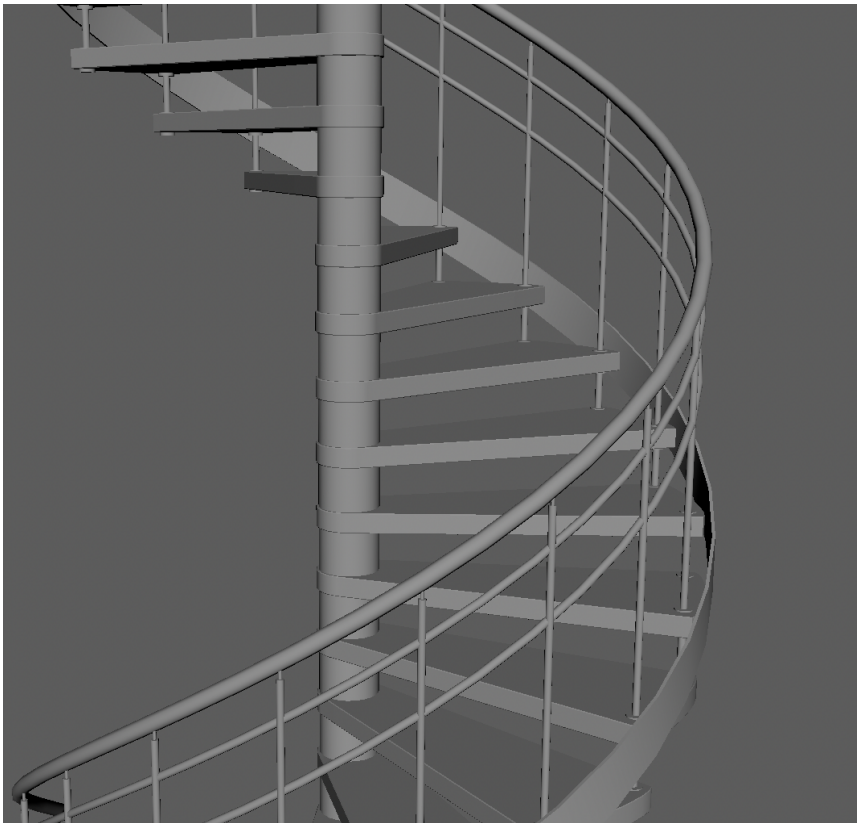
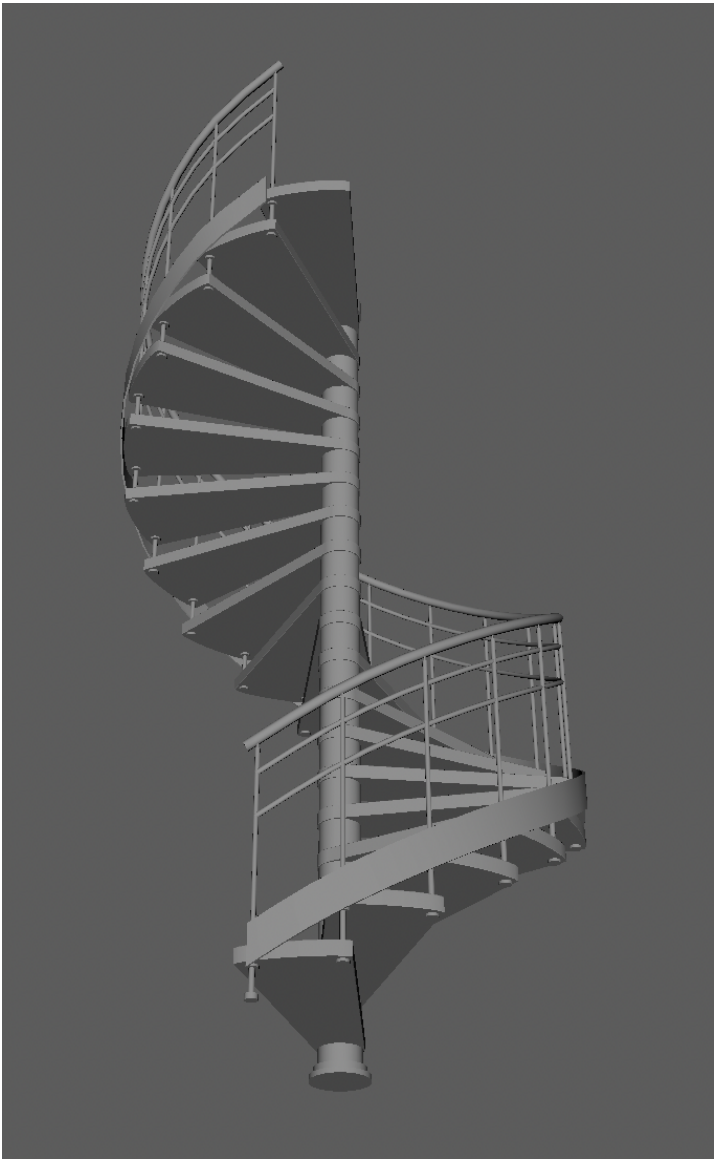






## Spiral Staircase





---

## Journal

Gah! (there's a word you don't see that often) This was a hard assignment!! I think I overestimated my abilities and underestimated the time I thought this would take me. I also blame some of the difficulty on the fact that I switched over to maya for this assignment so I had to also learn a brand new software, but I think I like maya more than blender so it's all good! (I also did the first part of this assignment with just my trackpad and that sucked, but I got a mouse for the last part and it went a lot better.)

I started with the spiral staircase because I actually found a tutorial for how to make one in maya on youtube and It was a really nice introduction to the software and some tools. I used some things I learned in that video to make both the grand staircase and the chandelier. The spiral staircase was fine, though, because I had that video, but the grand staircase is where things got rough.

I made the sweeping stairs at the bottom pretty easy, but for my second layer of stairs I originally had some curved stairs that I wanted to connect but I would try and mirror my stairs and put it on the opposite side, and when I wanted to create a platform in between them for the landing one of the stairs always ended higher than the other and I just could not figure out why. I decided to go with straight stairs though after way too long of failing with the twisted ones, and then It went fine. Halfway through the grand staircase I got the mouse and it made a world of difference (screw apple trackpad, I need the 3rd button!) I added some fun embellishments to the staircase which I hope you can see in the pictures.

The chandelier was also fine, I did it right after doing the grand staircase so I was on a roll, and it went pretty quickly. I was kinda struggling with making a MASH for the light bulbs because I used a weird shape that wouldn't group with everything else, so I had to do some individual copying which was annoying but It worked out in the end.